

Knowledge Base

THIS IS NOT AN OFFICIAL TECHNICAL PUBLICATION. THIS KNOWLEDGEBASE ENTRY IS THE PROPERTY OF CANON U.S.A. AND IS CONFIDENTIAL INFORMATION TO BE RETAINED FOR REFERENCE PURPOSES BY THE AUTHORIZED DEALER WITH WHOM SERVICE AGREEMENTS HAVE BEEN ENTERED INTO. USER AGREES TO INDEMNIFY CANON U.S.A. INC. AND TO HOLD IT HARMLESS AGAINST ANY CLAIM ARISING BY REASON OF THE POSSESSION OR USE THEREOF ITS UNAUTHORIZED USE IS PROHIBITED.

Product : All imageRUNNER-iR Series, Color imageRUNNER C3200 / C3220 / C2620 / C2550 / C2880 / C3380 / C3170 / C3080 / C3480 / C4080 / C4180 / C4580 / C5870 / C6870 / C5180 / C5185 / C5058 / C5068, imagePRESS C1 / Q1 / T1 / A2000 / A2100 / A3000 / A3100

Title : How do I pull scan from Word 2007?

Question :

How do I pull scan from Word 2007?

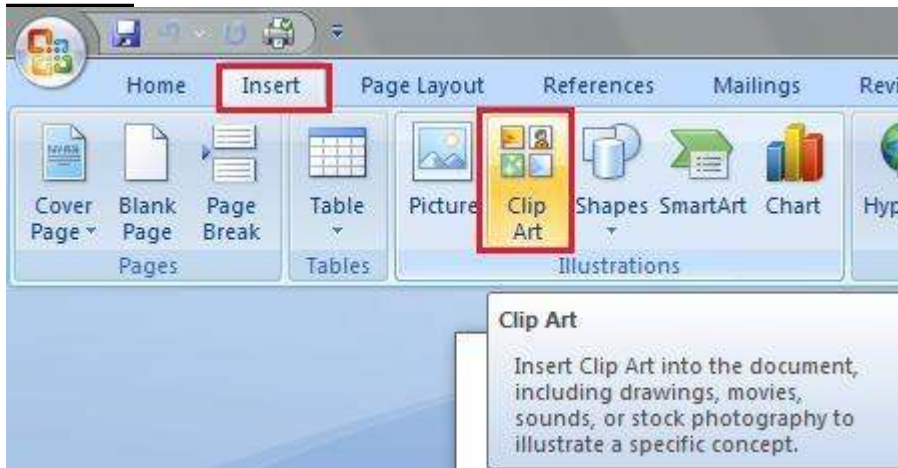
Answer :

When using Color Network Scangear or Network Scangear in an environment with MS Word 2007 you will have to take a different route to pull scan when compared to previous versions such as Word 2003. In the newer version the location of Scanner and Cameras has been moved. Follow the steps below to start a pull scan procedure.

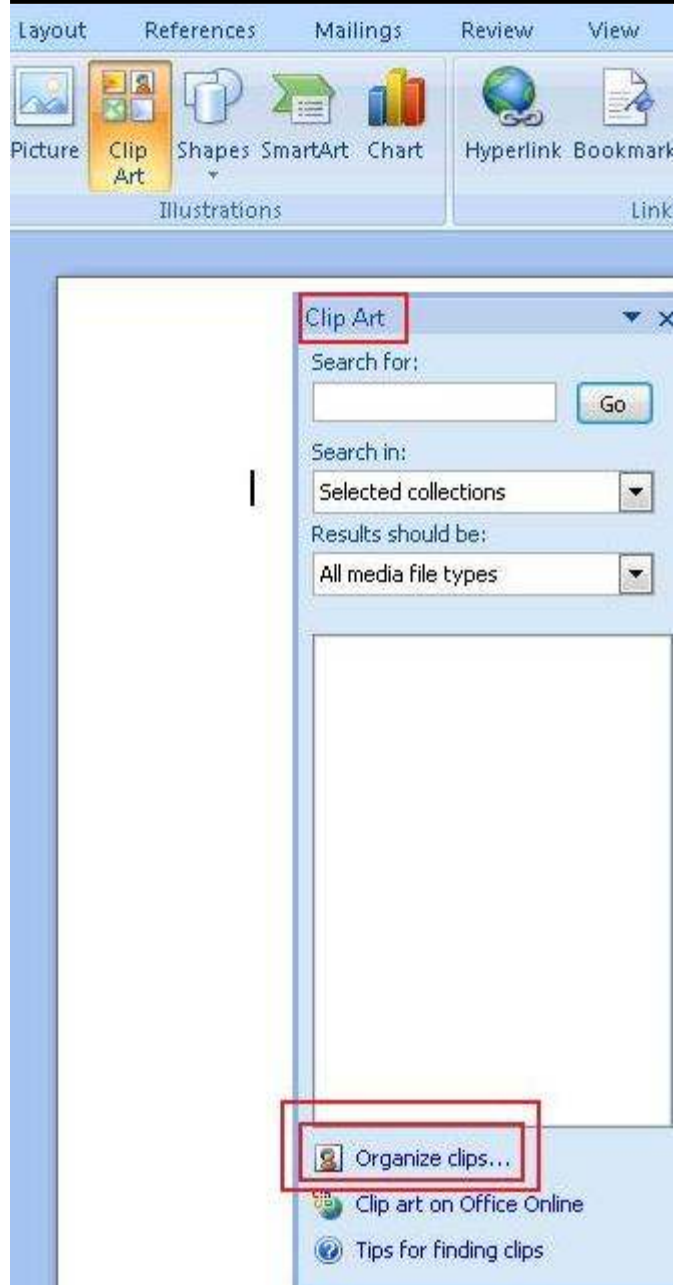
1. Launch the Microsoft Word 2007 application.



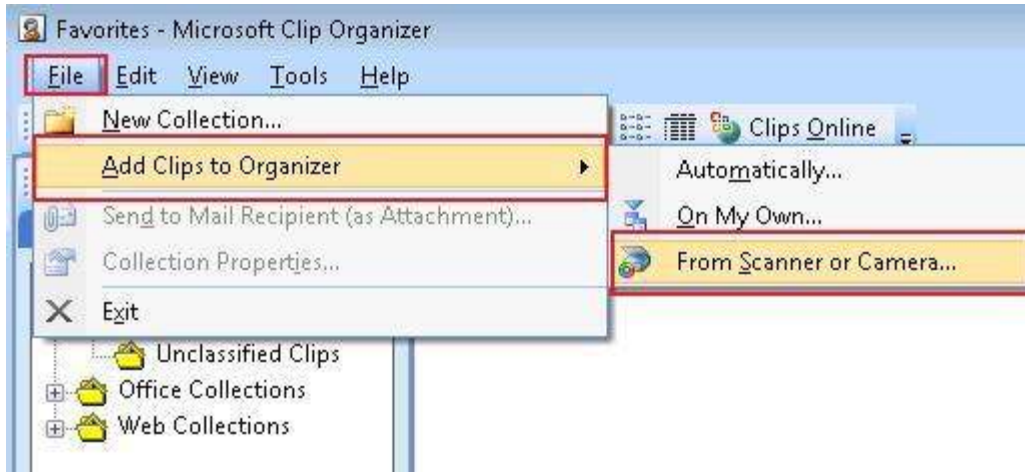
2. Inside your Word program click on Insert. Then go to the Clip Art button and select it.



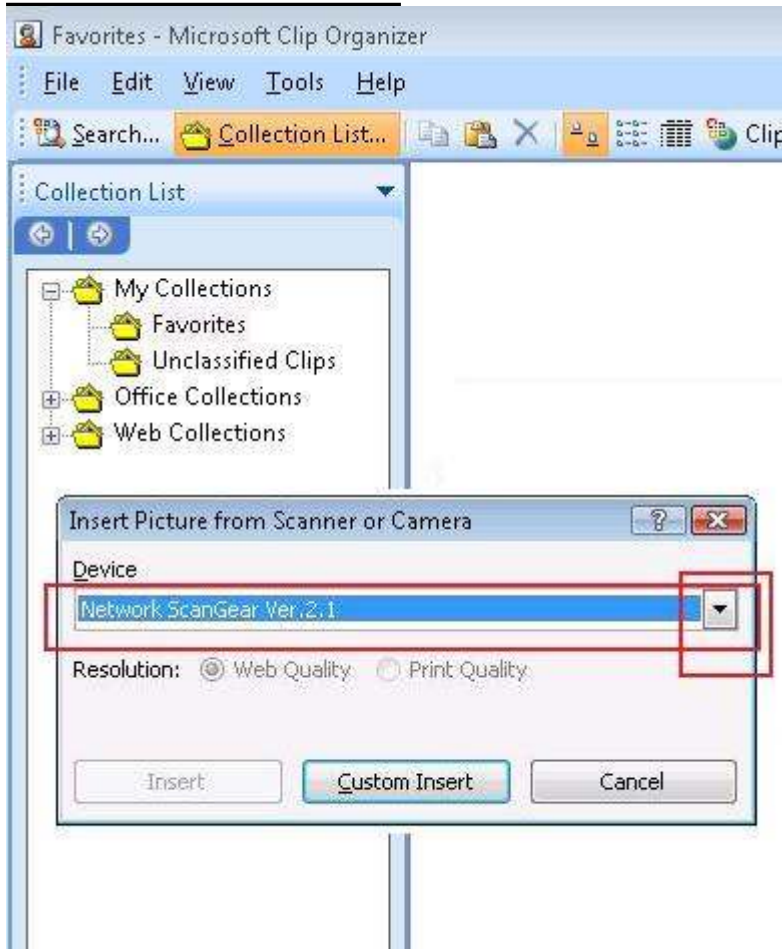
3. Choose the Organize Clips button in the Clip Art window.



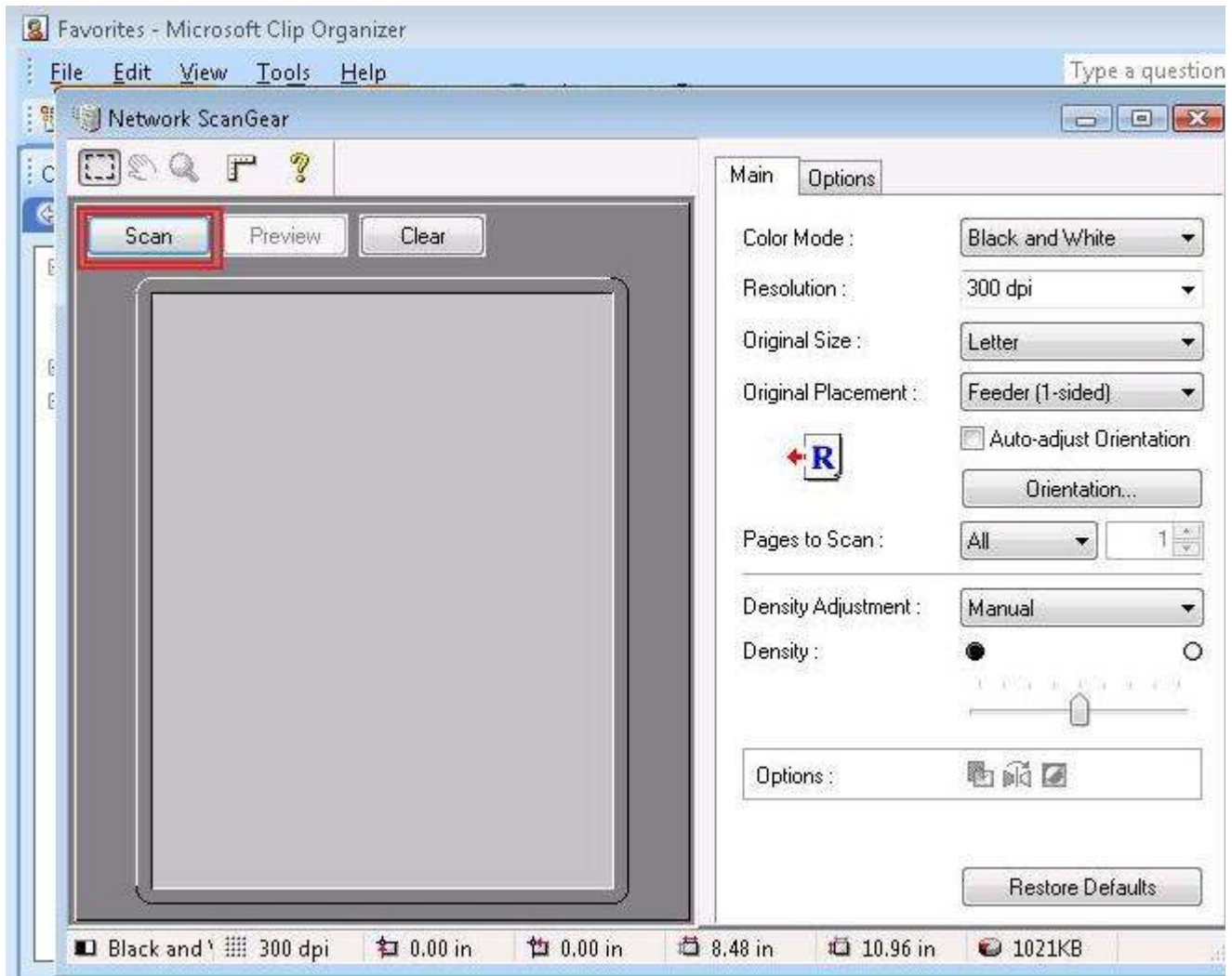
4. This will open up the Microsoft Clip Organizer. Here go to File, select Add Clips to Organizer and choose From Scanner and Camera.



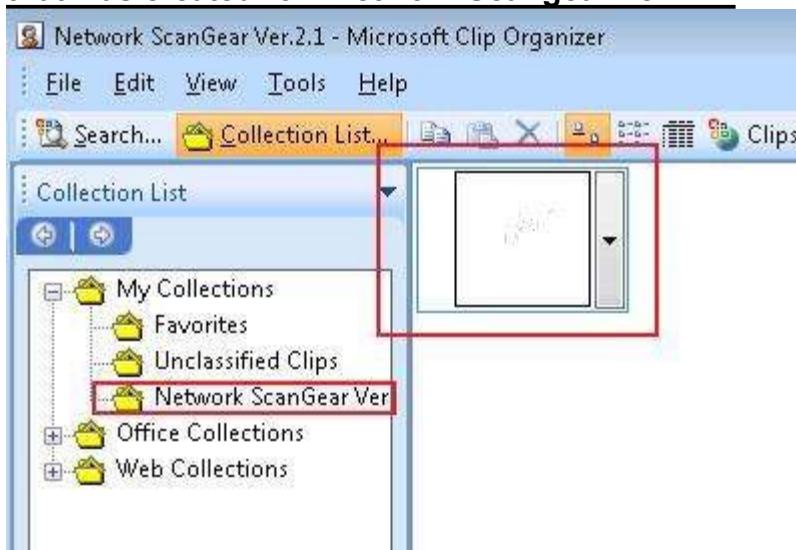
5. Highlight the scan driver you want then select Custom Insert. In this case it is Network ScanGear Ver2.1.



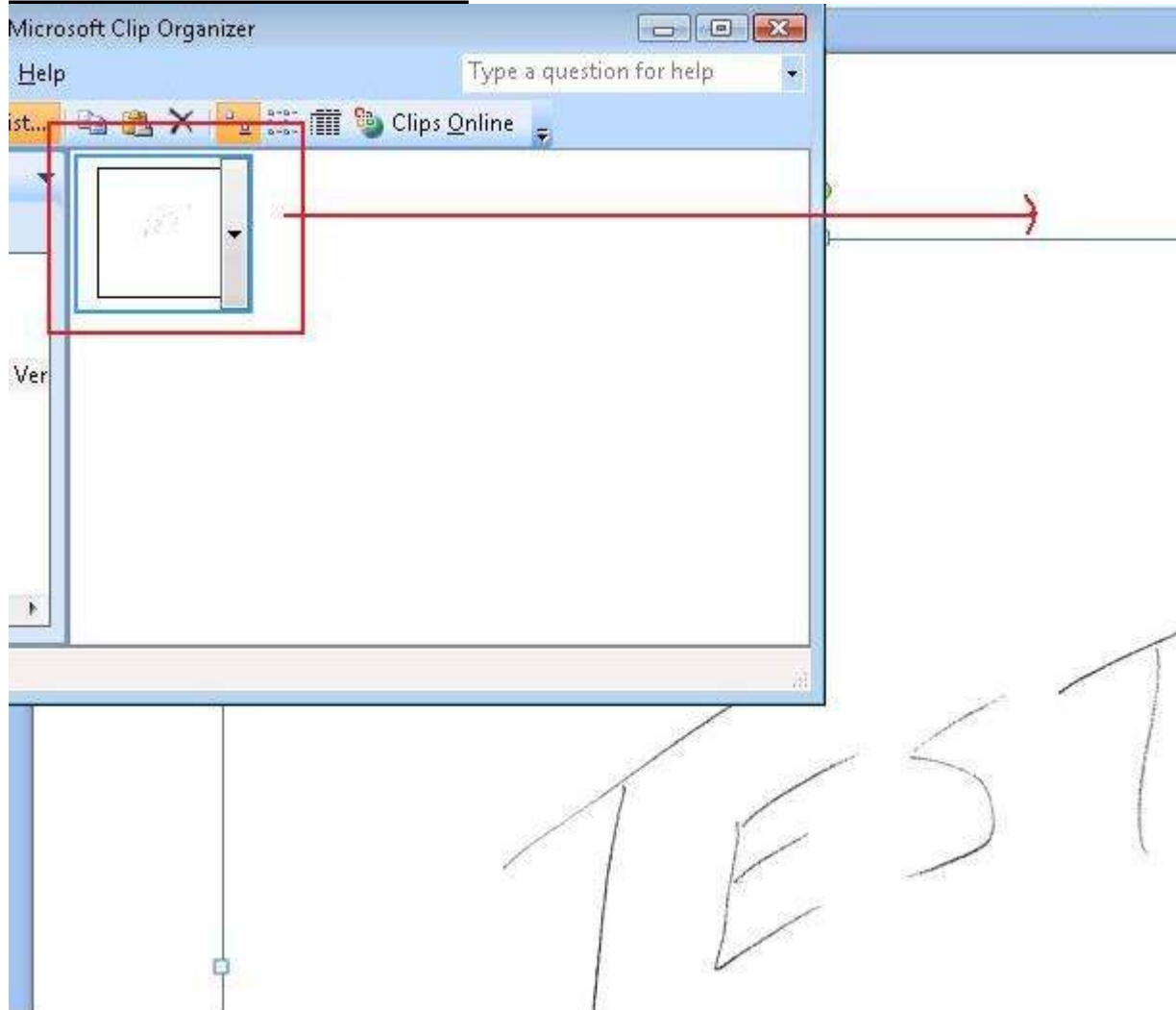
6. Scan your document through the Network ScanGear dialog box.



7. The image will be imported into the Microsoft Clip Organizer. It will be in a folder that was created for "Network Scangear Ver2.1."



8. Now you can drag and drop the image into your blank Word document or Copy and Paste it into the document.



Canon USA, Inc. Systems & Technical Support Division

Article # : 62936

Reviewed
:
12/3/2010

Category : Knowledgebase > National Accounts Knowledge Base > imageRUNNER Series (Color)
Knowledgebase > National Accounts Knowledge Base > imageRUNNER Series (B/W) >
imageRUNNER-iR (Canon Controllers)
Knowledgebase > imageRUNNER Series (B/W) > Connectivity / Software Solutions
Knowledgebase > imageRUNNER Series (Color) > Connectivity / Software Solutions
Knowledgebase > imagePRESS Series (Color) > imagePRESS Server Q1 * Q2
Knowledgebase > imagePRESS Series (Color) > imagePRESS Server T1
Knowledgebase > imagePRESS Series (Color) > imagePRESS Server A3000 * A3100
Knowledgebase > imagePRESS Series (Color) > imagePRESS Server A2000 * A2100